

Glory Hole Manual

setting up your glory hole and lighting instructions



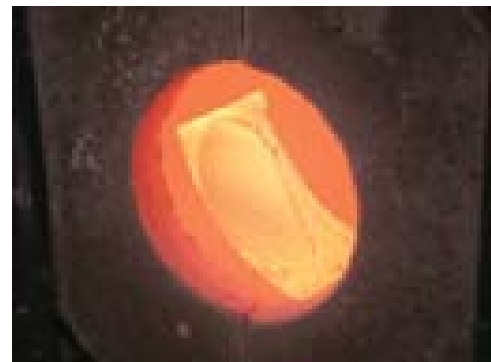
**DENVER GLASS
MACHINERY**

2800 South Shoshone St. • Englewood, Colorado 80110
Ph: 303 781- 0980 • FAX: 303 781-9067
Web: www.denverglass.com
EMAIL: info@denverglass.com

SETTING UP YOUR GLORY HOLE

Unpack the glory hole from its crate. Set the box aside (this contains your burner, burner block, mounting bracket etc.). Have a friend help you lift the glory hole off from the crate base and move it into place. The doors are lying in the bottom of the crate. They simply lift into place by placing the door hinge (rod) up into the top hole of the door hinge tab first, then setting the bottom of the door hinge (rod) into the lower hole. Next, set the leveling feet on the stand so that the glory hole leans back just a bit (like a refrigerator). This helps keep the doors closed. If they keep falling open, you have it leaning too far forward and if they won't stay open when you want them to, then it is leaning too far back. Now that you have this set, open the box that came with your shipment (you can skip this part if you have a ribbon burner). Find the mounting bracket and slip it into the tubular piece on the burner side of your glory hole and tighten the "t" handle just slightly to hold it in place.

Take the burner block out of the box and slide it into the burner port hole on the side of the glory hole. It should sit so that the curve of the cast block matches the curve of the inside of the glory hole. The rest of it sits on the bracket that is welded to the frame. Next, get the burner out and put the Gibberson burner head on the end of the burner. Mount the burner on the burner bracket. The burner head should be lined up so it is sitting in the center of the hole of the burner block and only sticking in the hole about $\frac{1}{4}$ of an inch. Now tighten the adjustments on the burner bracket. Hook up the gas connection.



LIGHTING INSTRUCTIONS FOR MANUAL GAS BURNERS

First, connect your burner to your gas source. If you have a natural gas system you will simply connect the flex hose to the burner. If you are running on propane, connect the hose and regulator set to your tank. Turn the tank on and then adjust the regulator to about 2 lbs. After you have connected your burner to your gas source, plug in the blower motor and turn it on. Close the air valve. To light ribbon burners, wad up a piece of newspaper into a wick and light it. Lay it in front of the burner head. Come around to the side of the glory hole and turn the gas on about 1/3. The burner will light. If you have a Gibberson burner head you can use a handheld propane torch to light it through the burner port. Now, just crack the air valve open a tiny bit. You should have a large blue flame blowing all the way across and up the other side of the glory hole. If you need to adjust the gas, it is best if you close the air valve back down and re-adjust the gas. When you have the large blue flame, let it burn for about 15-30 minutes with no adjustments (time will depend on size of the glory hole). When it passes dull orange to bright orange you can start turning up the gas. By now the large blue flame has changed color but the tight blue flame near the burner head should still be there. The tight blue flame should be kept down inside the port or, with ribbon burners, all along the burner head itself. If it starts to lift out into the glory hole you have too much air. As the glory hole comes up to working temperature (bright orange turning to yellow), you may have to back the gas & air off a little. If the glory hole gets too hot it will be devoid of color and may damage the liner. Now that it is humming along, follow these simple rules:

DO NOT- *turn the air down without turning the gas down (this can cause the gas to ignite inside the burner)*

DO NOT- *turn the gas up without turning the air up (this can cause the flames to come out the front)*

DO NOT- *leave the unit unattended. If the power goes out or for any reason, the blower stops; the gas must be turned off immediately!*

When you turn off your glory hole, close the gas valve (and close the propane tank). Leave the blower running until the inside stops glowing.

Burner operator must be mindful. Burner plumbing, mounting and installation must be inspected before each use to insure that no hazardous conditions exist prior to lighting the burner. Your glory hole is a self ventilating appliance and is equipped with a manual burner. Virtually all burners are themselves not approved because they become part of systems which are field approved by local agencies. If you experience problems with compliance to local codes, feel free to contact us or have the inspectors contact us. We use the finest approved parts available.

WARRANTY

All burners and their components are warranted against defects in parts for one full year from purchase date. Warranty covers normal use and safeguards. Denver Glass Machinery, Inc. will not be liable for any loss or damage that may arise in connection with the use or performance of any item, including, without limitation, any indirect or consequential damages.